

# Recommendations

# State of the Voluntary, Community & Social Enterprise Sector 2017 Manchester



Participants in the 2016 Spirit of Manchester Festival—Macc's annual celebration of the work of the VCSE sector

"Our vision is one where every community in Manchester is rich in voluntary, community and social enterprise organisations of all kinds and varieties, working with all kinds of people and in all kinds of ways, where the VCSE sector is at the core of public debate about what kind of society we are trying to create. The VCSE sector embodies the passions and ideals of the city. We want to see a Manchester which is more caring, where everybody has a decent job, where everyone strives to reduce inequity and where no-one is 'hard-to-reach.' "

The **Way Forward** is a series of proposals developed by the Manchester Voluntary Sector Assembly.

- **Maximising inward investment:** Increase the money and resources coming into the sector. We want to work with major national grant-giving organisations on ways to create a more equitable distribution of their funds. We want to work with statutory organisations and private businesses to increase the number and size of grant-giving organisations that give primarily to Manchester causes.
- **Increasing employment:** Increase our ability to employ Manchester people. We want public, private and VCSE sector partners to recognise and enhance our vital contribution to the employment of people in Manchester and enhance our ability to act as a route to employment for local people.
- **Increasing our impact in areas of low VCSE activity:** Increase the number and effectiveness of organisations. We want to work with partners to develop our sector's ability to target our expertise and resources to increase VCSE activity within selected areas of Manchester.
- **Increasing mutual support:** Develop the means to increase the quantity and quality of mutual support between organisations and people working in the sector.
- **Connecting Manchester people to the local VCSE sector:** Improve the use of social media to communicate and interact. We want to work with the vibrant and expert digital media sector in Manchester to improve the way the VCSE sector uses digital technology (including social media) to reach more people and develop new approaches to support and community activities.
- **Working across Greater Manchester:** Collaborate with other boroughs to develop a shared 'Way Forward'. We will work with partners in neighbouring boroughs across Greater Manchester to strengthen the contribution the VCSE sector can make to eradicating inequality.



Growing in the City (GITC) is a community food growing and educational project based in East Manchester. Winners of the 2016 Spirit of Manchester Award for Best Community Space.

Charities, voluntary organisations, community groups, faith groups and social enterprises in Manchester.

**3,394**

Volunteers working across the city.

**110,090**

Full Time Equivalent paid staff (16,300 employees)

**11,000**

The **State of the VCSE Sector 2017 Report** provides a comprehensive overview of the Voluntary, Community and Social Enterprise (VCSE) Sector in Manchester, following up on our previous research in 2013.

The report is part of a Greater Manchester wide project to analyse and understand the role the VCSE sector plays in local communities and the economy of Greater Manchester.

- The "VCSE Sector" is our catch-all term for charities, voluntary organisations, community groups, the community work of faith groups, and those social enterprises and community interest companies where there is a wider accountability to the public via a board of trustees or a membership and profits will be reinvested in their social purpose.

The research was undertaken by the Centre for Regional Economic and Social Research (CRESR) at Sheffield Hallam University working collaboratively with Macc and our 10GM partners plus GMCVO and Stockport Council.

- 10GM is a joint venture by the Greater Manchester VCSE sector infrastructure organisations including Macc. It represents a combined membership of thousands of local voluntary, community and social enterprise organisations.
- GMCVO (Greater Manchester Centre for Voluntary Organisation) is a voluntary sector support organisation covering the city-region of Greater Manchester.

The research involved a web-based survey of organisations as well as specific focus groups that were hosted by Macc and then analysed by CRESR.

Copies of the full report are available on our website:

[www.manchestercommunitycentral.org](http://www.manchestercommunitycentral.org)



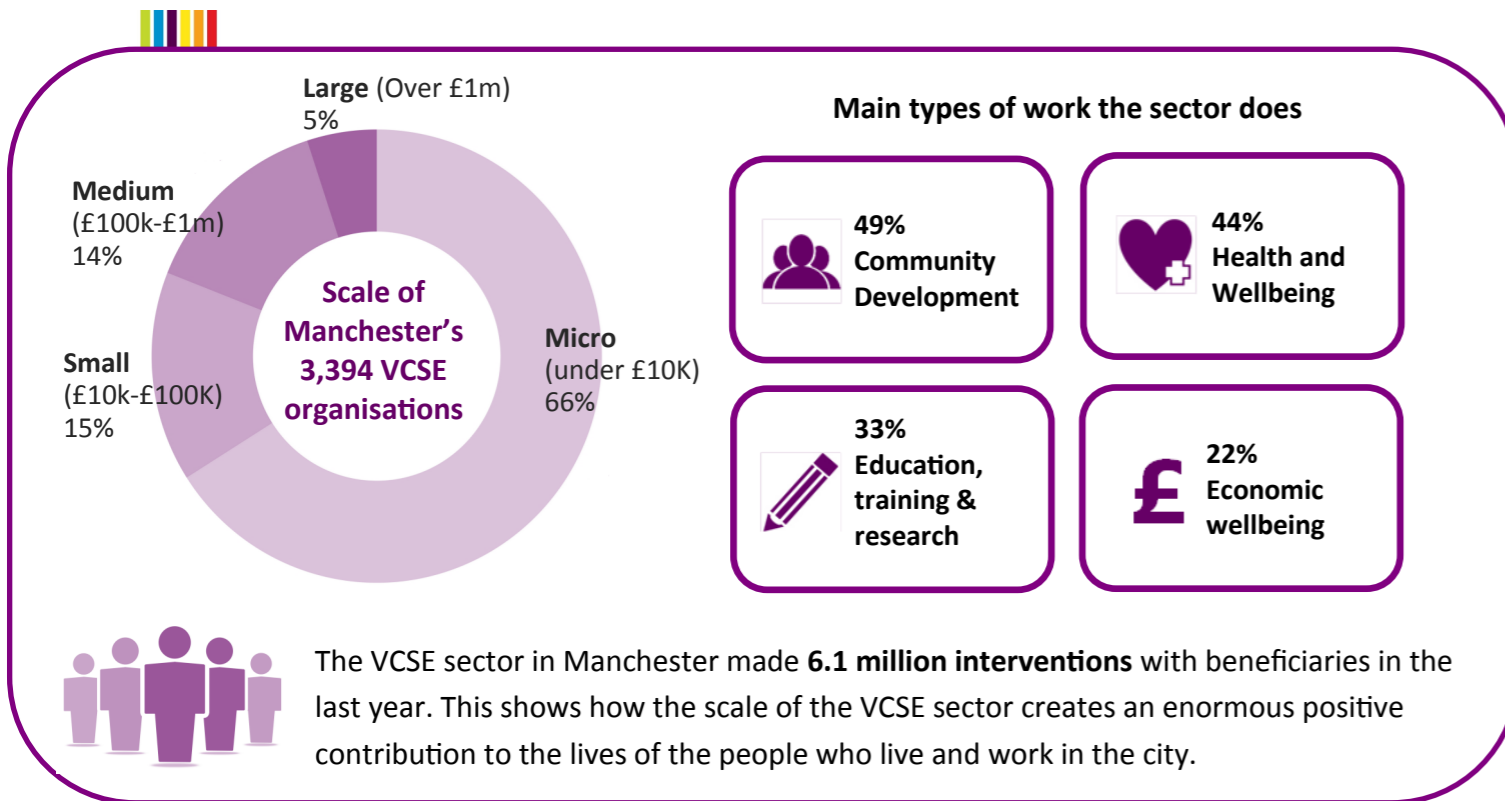
For more information about the VCSE Sector in Manchester and to find out how you can get involved in taking these recommendations forward, please contact Macc on 0161 834 9823 or email: [info@macc.org.uk](mailto:info@macc.org.uk)



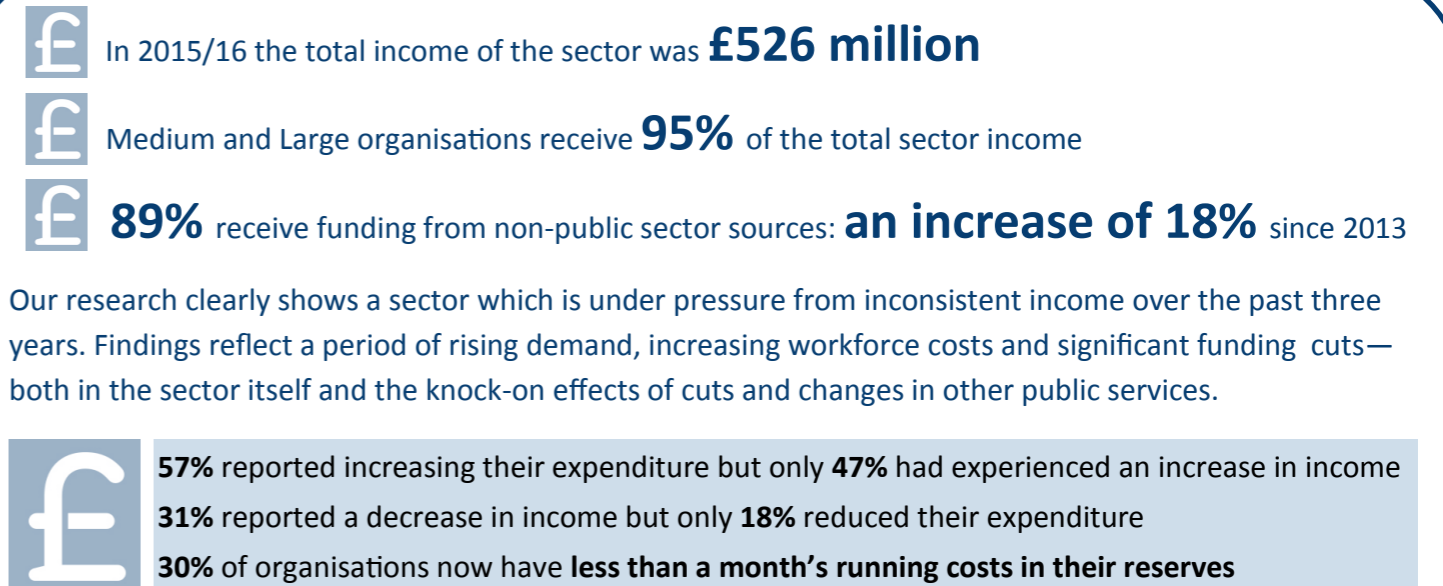


# City of Manchester State of the Voluntary, Community and Social Enterprise Sector 2017

The VCSE sector in Manchester is an essential part of the social fabric of this city. Our research shows that Manchester's VCSE sector continues to provide many important services and activities in all local communities. It also continues to occupy an important strategic position between local policy development and everyday life. The sector plays a key role in fostering strong and cohesive communities within the City of Manchester.



The VCSE sector makes a significant contribution to the economy of Manchester. Not only do we provide a wide range of community amenities and services, we also focus a great deal of our work on tackling poverty and inequalities. The sector is also a sizeable **employer** and brings additional **investment** into the city.



## Volunteering in Manchester is an asset



**110,900** volunteers giving a total of **278,600** hours each week

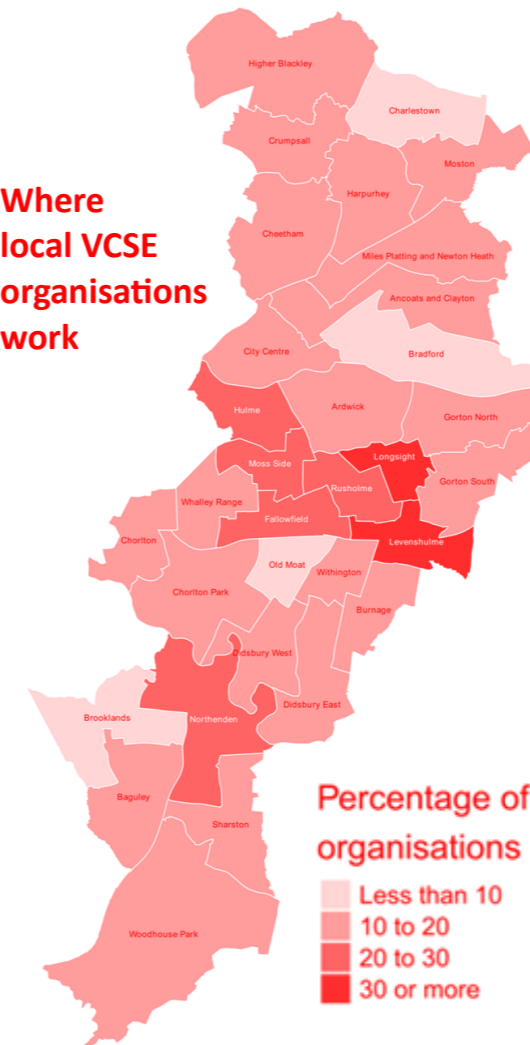
Whilst the headline figures are positive with more residents volunteering than ever before, however the number of hours individuals volunteer has decreased since 2013. Potential reasons for this include:

- Impacts of 'austerity' — reductions in the time people can afford to spend in unpaid work and welfare benefit reforms which limit the time permitted for volunteering
- A growth in placements focusing on employability which take up additional organisational support
- A growing mismatch between what organisations need volunteers for and what volunteers wish to do
- The loss in Volunteer Co-ordinator posts in many organisations. This has limited capacity organisations have available for volunteer recruitment and also inductions, ongoing support and training



The contribution of volunteers in Manchester's VCSE sector is valued at **£252.1 million** per year

## Where local VCSE organisations work



## Partnership working is important

Partnership working is key to the sector.

- **26%** of Manchester organisations are part of a VCSE-led consortium
- **79%** are actively seeking to work more closely with other VCSE organisations

Public sector relationships are well established. Respondents told us about their dealings with local public bodies:

- **84%** with Manchester City Council
- **61%** with the University of Manchester
- **58%** with Greater Manchester Police
- **39%** with NHS Manchester CCG

Whilst relationships in Manchester are broadly positive, there is still work to do on collaboration with the private sector and around Greater Manchester Devolution.

- **40%** of organisations said they have 'not very much' direct dealings with private businesses while **29%** said they have 'none at all'
- **51%** of Manchester organisations have had contact with the emerging Greater Manchester structures