

Inspiring Impact legacy project: Greater Manchester

The partners involved in the national [Inspiring Impact](#) programme are offering to work in Greater Manchester to cascade learning and help to build a local programme of work led by the [GM Social Value Network](#).

Background to the Inspiring Impact Programme

'Inspiring Impact supports people who work and volunteer for charities, funders, and social enterprises across the UK. We provide free online resources, peer learning networks, and grant funding, so you can plan, understand, and improve your impact'

Its activities included:

- Inspiring Impact website
- Networks and events across the UK
- Online learning and self-assessment resources
- Online resource library
- Network of 'Inspiring Impact Champions' who are committed to improving practice and helping others also to do so

The national Inspiring Impact programme has now finished, although the digital resources to be hosted by [New Philanthropy Capital](#).

However, the partners involved in the national programme are offering a range of legacy activities that enable knowledge and practice to be safely transferred, and to continue in local partnerships and networks.

The resources, knowledge and practice don't just need to be shared with charities and social enterprises – they could equally be useful for businesses, the public sector and the wider 'social economy'.

Greater Manchester proposal

[Social Value UK](#) was the lead for England in Inspiring Impact and is proposing to deliver a range of activities aimed at sharing the 'Inspiring Impact' approach in partnership with GMSVN. This would be an exemplar project for England, exploring how an intensive, multi-faceted programme of interventions in one 'place' might produce more sustained outcomes, and see more organisations in GM be able to understand, improve and report their (social) impact.

Inspiring Impact Greater Manchester

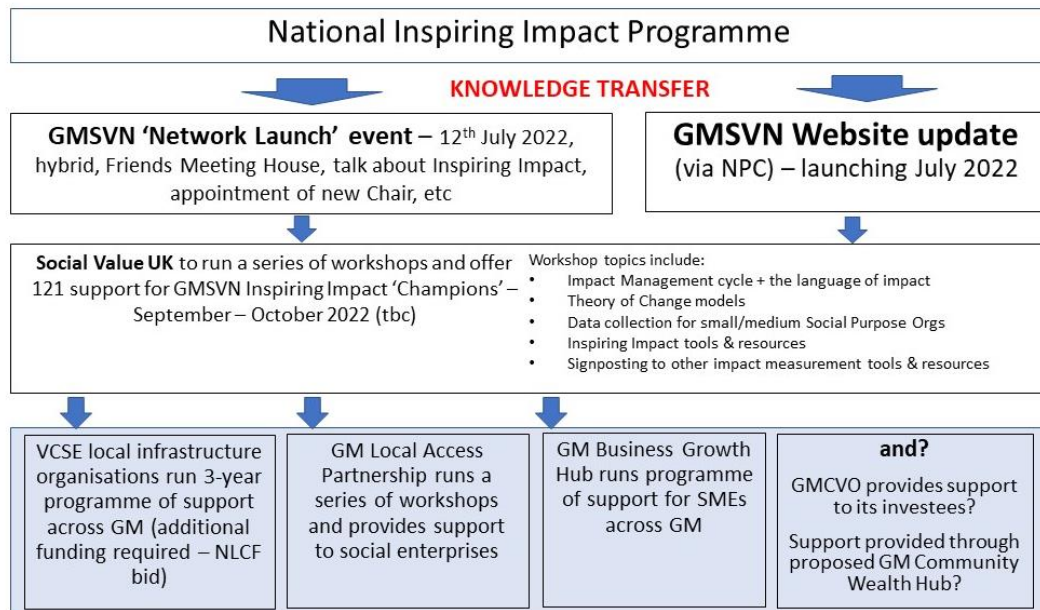


Figure 1:

Figure 1 shows an overview of the programme, which has four constituent parts:

1. **Knowledge transfer** from Social Value UK to GMSVN members in 2 ways:
 - a. Through a full **Network event** to which all GMSVN are invited
 - b. Through a short programme work online workshop sessions facilitated by SVUK for around 12 **GM Inspiring Impact 'Champions'**, active across many different types of organisations in GM – all of whom will commit not only to using the learning in their own roles, but also to inspiring others to embed impact.
2. **Creating a virtual bridge** between Greater Manchester and the Inspiring Impact programme, by linking up the GMSVN and NPC websites and providing some triage / diagnostics at the GMSVN website
3. **Delivering support to Inspire Impact, using the tools and knowledge received.** This will take the form of a range of projects, programmes and consultancy, including a programme delivered by VCSE local infrastructure organisations for VCSEs (with support from NLCF), through the Local Access Programme for social enterprises, the Business Growth Hub for GM SME businesses, and potentially paid-for support for other businesses.
4. **Embedding the learning** through the business of GMSVN, with support from SVUK.