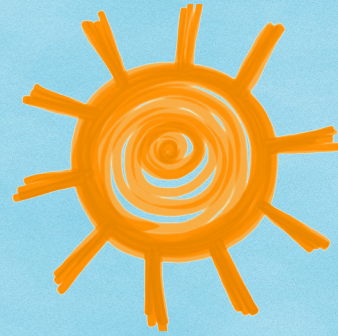


# Looking for a fresh start?

**Self-Reliant Groups**

a different approach



## Church Action on Poverty needs people to help us develop Self-Reliant Groups in Greater Manchester.

A Self-Reliant Group (SRG) is made up of 4–10 members from the same neighbourhood and/or similar economic and social experience. They meet regularly and save small manageable amounts, such as 50p or £1 per week. The group is not dependent on outside funding, and has collective and rotating leadership.

The SRG and its members are encouraged to start an enterprise (collectively or as individuals supporting each other) and self-determine their own focus and agenda. Church Action on Poverty nurtures the SRG and its members in the initial months until they become 'self-reliant', and introduces the SRG to the wider network within Greater Manchester and other areas of the UK.

We are looking for....

### ■ A person who can visit existing groups and organisations and promote SRGs.

You need to have a passion for helping people make positive changes through peer support and activities that they take responsibility for. You need to be a self-starter who can initiate discussion about the SRG movement and introduce this way of working to groups and individuals across Greater Manchester. You also need to understand what it feels like to be in a group and to facilitate a group.

### ■ A number of facilitators who can run SRGs, using a tried and tested plan.

You need to have been in a community group and have some experience of playing a role in this group. Don't worry – we offer training to make sure you are confident to do this.

## Find out more

The Self-Reliant Group movement is relatively new in Greater Manchester, but it is widely known in Scotland and Wales. To get a feel for the movement, have a look at:

[www.church-poverty.org.uk/srg](http://www.church-poverty.org.uk/srg)  
[www.wevolution.org.uk](http://www.wevolution.org.uk)



## You're invited

Come along to an information session. You will find out all about SRGs and you can decide if either of these roles is for you.

**Thursday 14 March, 11:00am–1pm**

**Saturday 16 March, 10:00am–12:00pm**

**Church Action on Poverty,  
28 Sandpiper Court, Water's Edge Business  
Park, Modwen Road, Salford M5 3EZ**

To register your interest please contact Joyce Kay on [joyce@church-poverty.org.uk](mailto:joyce@church-poverty.org.uk) or 0161 872 9294.